



WCN Opto Group Co., Limited

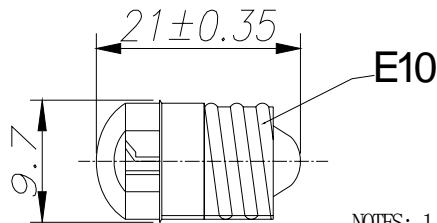
WCN-E10D24-Y

SPECIFICATION

WCN			CUSTOMER
Prepared by	Checked by	Approved by	Confirmed
Fei 2016-6-29	Athena		
REVISION RECORD			

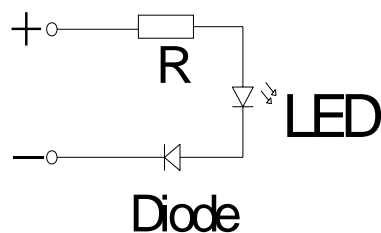


REVISION:A0

Outer Dimension and Circuit Diagram:

NOTES: 1. ALL DIMENSIONS ARE IN mm , TOLERANCE IS ± 0.25 , UNLESS OTHERWISE NOTED.

2. AN EPOXY MENISCUS MAY EXTEND ABOUT 1.5mm DOWN THE LEADS.



Notes: Unless otherwise stated, the tolerance is ± 0.25 mm.

Features:

- High Reliability
- Emitting Color: Yellow
- Low Power Requirement
- Easy Assembly

Description:

- LED Signal Lamp
- One Pieces Yellow Color LED
- Yellow Epoxy with Water Clear Cover
- LED Base: E10

Applications:

- Illuminations
- Indicator





WCN Opto Group Co., Limited

■ Typical Electrical & Optical Characteristics (Ta = 25°C)

Items	Symbol	Condition	Min.	Typ.	Max.	Unit
Forward Voltage	V_F	$I_F = 10\text{mA}$	---	DC24	---	V
Forward Current	I_F	$V_F = 24\text{V}$	---	---	10	mA
Peak Forward Current	I_{FP}	1/10 duty 10KHZ	---	---	90	mA
Power Dissipation	P_D	---	---	---	240	mW
Luminous Intensity	I_V	$I_F = 10\text{mA}$	70	140	---	mcd
Peak Emission Wavelength	λ_p	$I_F = 10\text{mA}$	---	595	---	nm
Dominant Wavelength	λ_d	$I_F = 10\text{mA}$	---	590	---	nm
Operation	T_{opr}	-35 ~ + 85				°C
Storage Temperature	T_{stg}	-35 ~ + 85				°C

■ Data is subject to change without prior notice.