

World Components Network Service Ltd**Customer Name:**

深圳拓邦股份有限公司

Date:

2016-10-6

Part No:

WCN2S-1056BW-C1

**Product Group
Description:**

LED Display

Customer Part No:**Approval Date:****Customer
Confirmation****Approved by****Checked by****Prepared By**Athena
2016-10-6Fei
2016-10-6

Country of Origin: China

World Components Network Service Ltd5th Floor,Block A-2,Xuxingda Ind Zone
Shiyan Town,Bao An District , Shenzhen
Tel : (86)755-29000022
Fax : (86)755-29000023[www . wcnopto.net](http://www.wcnopto.net)

Table of Contents

NO.	ITEM	PAGE
1	Cover	1
2	Table of Contents	2
3	Revision Record	3
4	Description	4
5	Outer Dimension and Circuit Diagram	5
6	Absolute Maximum Rating and Electrical/Optical Characteristics Rating	6
7	Typical Electrical/ Optical Characteristic Curves and Spectrometer	7
8	Packaging Data	8
9	Moisture Proof Packaging	9

World Components Network Service Ltd

REVISION RECORD

MARKER	Matter for revision	SHEET	DTAE	MAKER	APPOVED SIGN	
	Reason for revision					
A0	P# WCN2S-1056BW-C1 <hr style="border-top: 1px dashed black;"/> New Version issued	Whole Spec	2016-10 -6	Fei	Athena	

1. Type No./Manufacture's Name

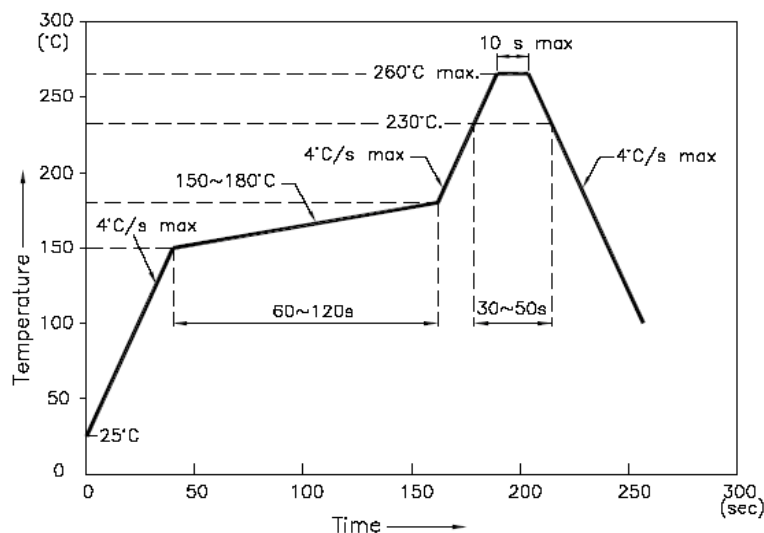
WCN2S-1056BW-C1 / World Components Network Service Ltd.

2. Features:

- High Reliability
- Low Power Requirement
- Easy Assembly

3. Faction: Display Digit Characteristic**4. Soldering Conditions: Soldering Temp. 260 ± 5 °C, Soldering Time. 3~5 sec.**

Soldering Power <30 W.

5. Re-flow Temp/Time**NOTES:**

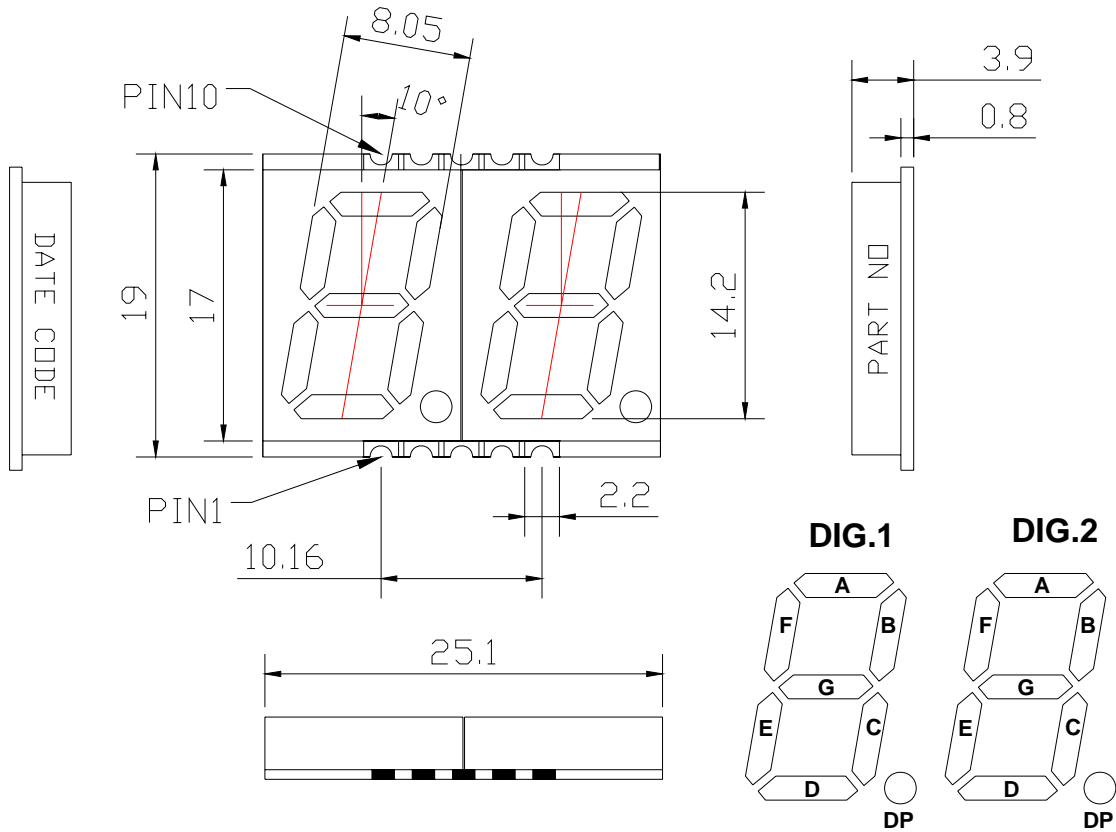
5.1. We recommend the re-flow temperature $245^{\circ}\text{C} (\pm 5^{\circ}\text{C})$. the maximum soldering temperature should be limited to 260°C .

5.2. Don't cause stress to the epoxy resin while it is exposed to high temperature. Number of re-flow process shall be 2 times or less.

6. Description:

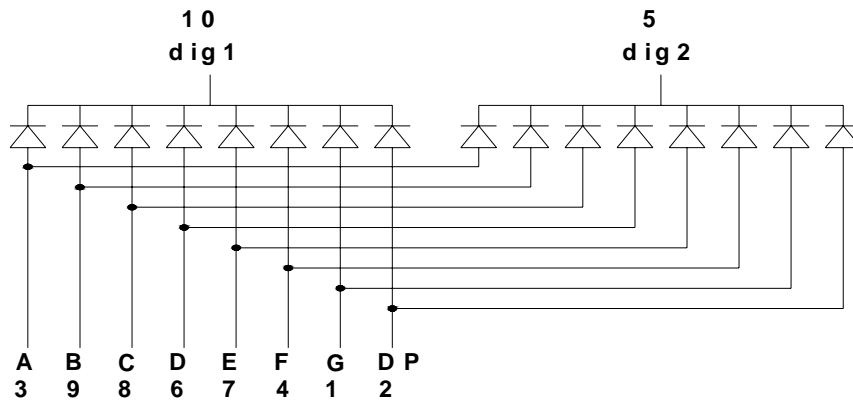
- Two Digit LED Display
- Digit Height: 14.2mm (0.56")
- Gray Face and Milky Segment
- Color: White

Outer Dimension:



Notes: Unless otherwise stated, the tolerance is $\pm 0.25\text{mm}$.

Circuit Diagram:



Pin Connection:

PIN NO.	CONNECTION	PIN NO.	CONNECTION
1	Anode G	6	Anode D
2	Anode DP	7	Anode E
3	Anode A	8	Anode C
4	Anode F	9	Anode B
5	Common Cathode dig2	10	Common Cathode dig1

World Components Network Service Ltd

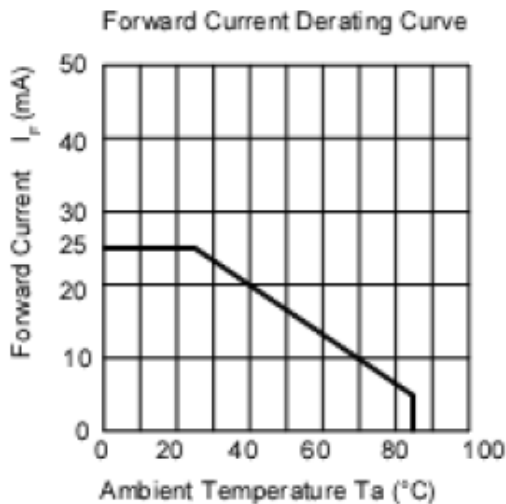
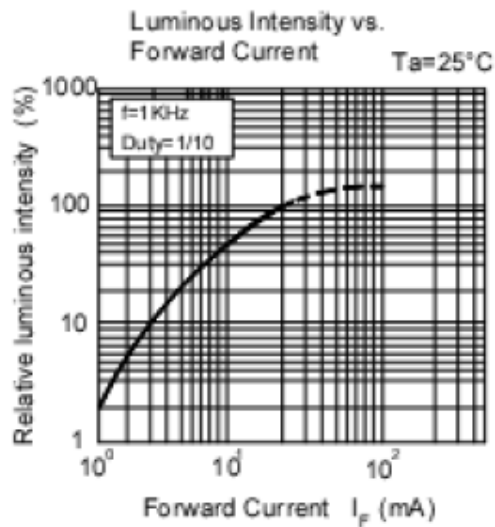
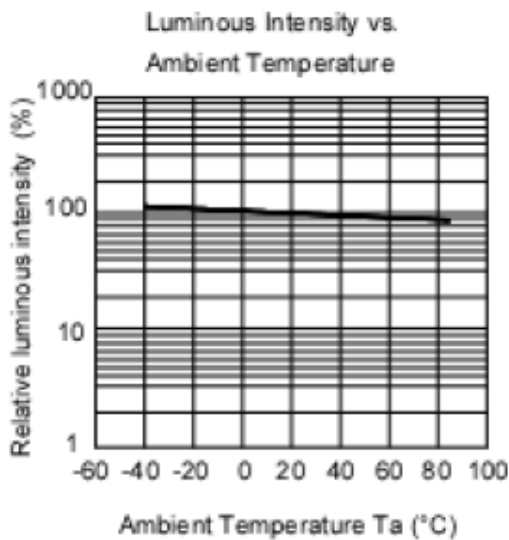
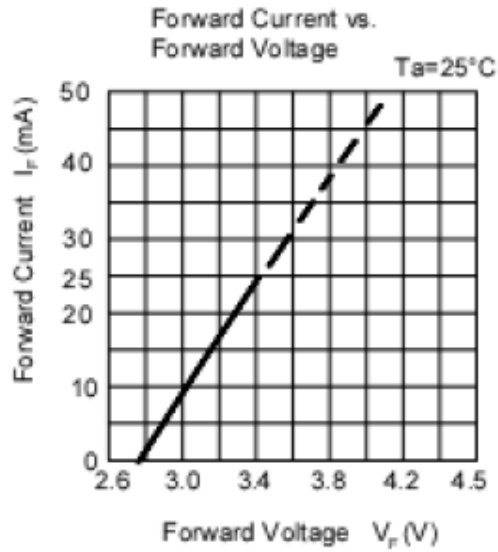
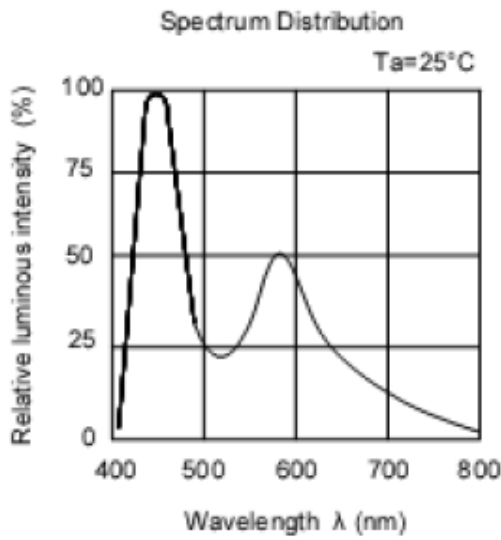
■ ABSOLUTE MAXIMUM RATINGS AT TA=25°C

Parameter	Symbol	Condition	Color	Rating	Units
Power Dissipation Per Segment	P_d	—	White	17.5	mW
Forward Current Per Segment	I_F	—	White	5	mA
Peak Forward Current Per Segment	I_{FP}	1/10 Duty 1KHz	White	100	mA
Reverse Voltage Per Segment	V_R	—	White	5	V
Operating Temperature Range	Topr	—	—	-40~+105	°C
Storage Temperature Range	Tstg	—	—	-40~+105	°C

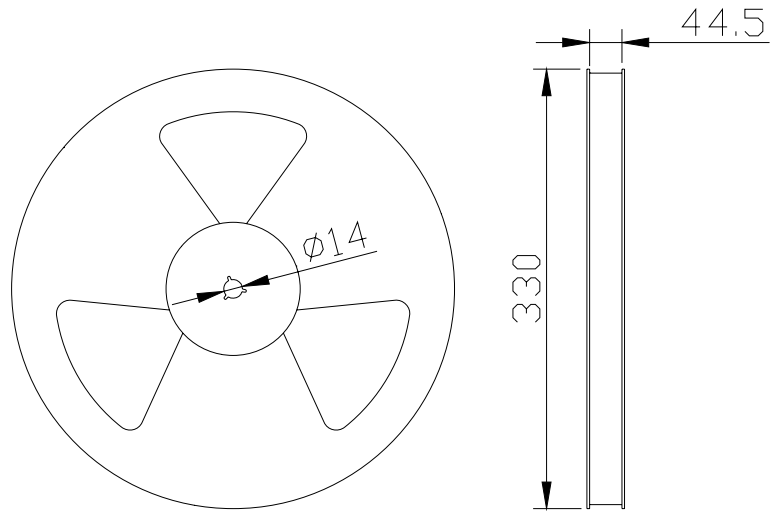
■ Electrical/Optical Characteristics Rating(Ta=25°C)

Item	Symbol	Test conditions	Location	Rating			Units
				Min.	Typ.	Max.	
Forward Voltage	V_F	$I_F=5mA$	Per Chip	2.50	3.00	3.50	V
Reverse Current	I_R	$V_R=5V$	Per Chip	—	—	100	μA
Luminous Intensity	I_V	$I_F=5mA$	Per Chip	150	350	500	mcd
CIE Coordinate	X	$I_F=5mA$	Per Chip	—	0.2311	—	nm
	Y			—	0.2351	—	
Spectral Line Half Width	$\Delta \lambda$	$I_F=5mA$	Per Chip	—	—	20	nm
Luminous Intensity Matching Ratio (Segment To Segment)	I_{v-m}	$I_F=10mA$				1.2:1	

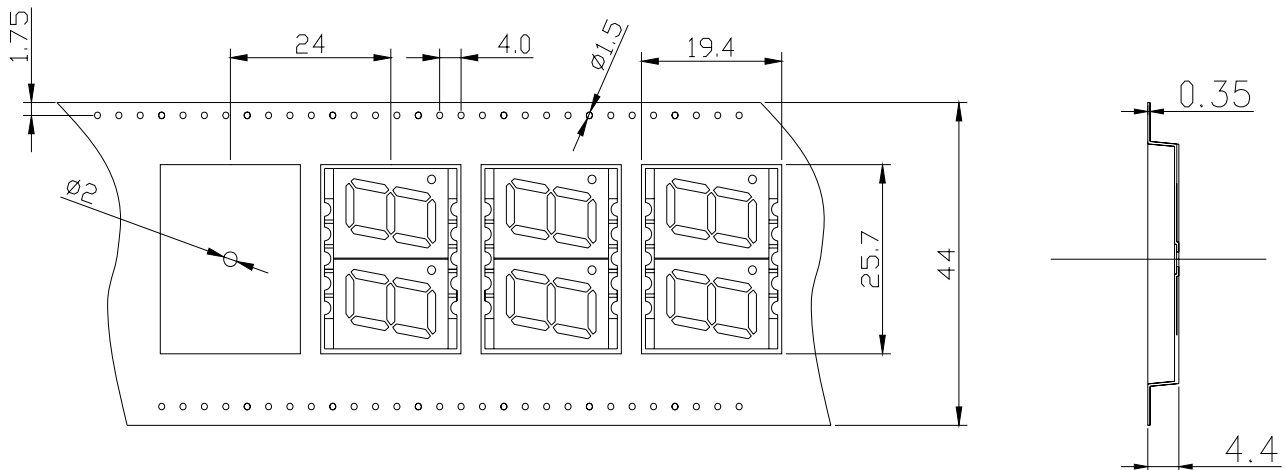
■ **Typical Optical-Electronic Characteristic Curves**



■ **Packing Reel Dimensions(mm):**

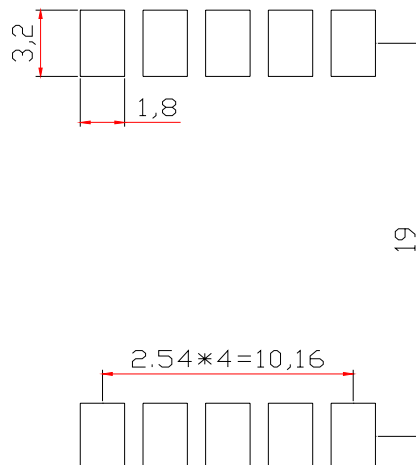


■ **Dimensions of Tape (Unit: mm)**



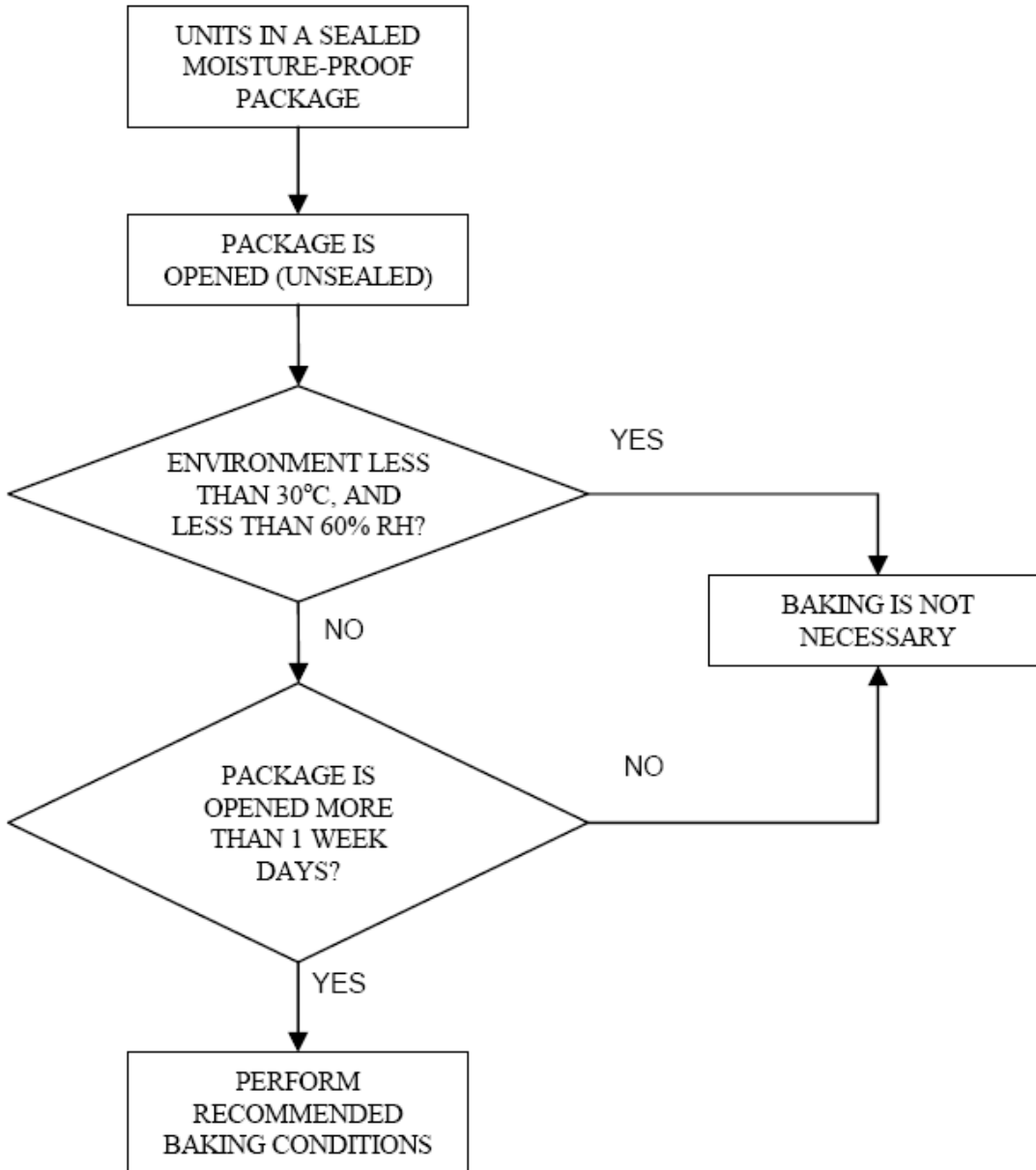
■ **One Reel contained 550 PCS products:**

■ **Recommended Soldering Pattern:**



■ **Moisture Proof Packaging:**

All N/D SMD displays are shipped in moisture proof package. The displays should be stored at 30°C or less and 60% RH or less. Once the package opened, moisture absorption begins.



■ **Baking Conditions:**

If the parts not stored in dry conditions, they must be baked before re-flow to prevent damage to the parts.

Package	Temperature	Time
In Reel	60 °C	≥ 48hours
In Bulk	100 °C	≥ 4hours
	125 °C	≥ 2hours

■ **Baking should only be done once.**