

WCN Opto Group Co., Limited**Customer Name:****Date:**

2017-07-19

Part No:

WCN3S-1036WW-A1

**Product Group
Description:**

LED Display

Customer Part No:**Approval Date:****Customer
Confirmation****Approved by****Checked by**Athena
2017-07-19**Prepared By**Fei
2017-07-19

Country of Origin: China

World Components Network Service Ltd5th Floor,Block A-2,Xuxingda Ind Zone
Shiyan Town,Bao An District , Shenzhen
Tel : (86)755-29000022
Fax : (86)755-29000023[www . wcnopto.net](http://www.wcnopto.net)

Table of Contents

NO.	ITEM	PAGE
1	Cover	1
2	Table of Contents	2
3	Revision Record	3
4	Description	4
5	Outer Dimension and Circuit Diagram	5
6	Absolute Maximum Rating and Electrical/Optical Characteristics Rating	6
7	Typical Electrical/ Optical Characteristic Curves and Spectrometer	7
8	Packaging Data	8
9	Moisture Proof Packaging	9

1. Type No./Manufacture's Name

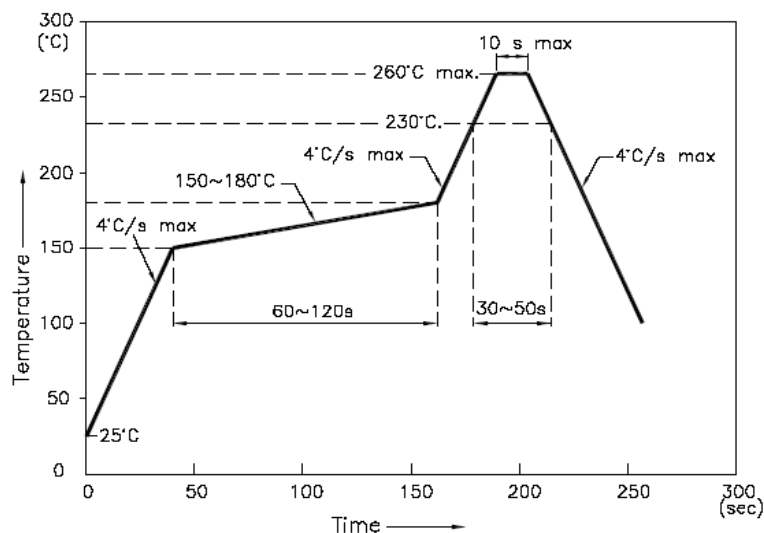
WCN3S-1036WW-A1 / WCN Opto Group Co., Limited.

2. Features:

- **High Reliability**
- **Low Power Requirement**
- **Easy Assembly**

3. Faction: Display Digit Characteristic**4. Soldering Conditions: Soldering Temp. 260 ± 5 °C, Soldering Time. 3~5 sec.**

Soldering Power <30 W.

5. Re-flow Temp/Time**NOTES:**

5.1. We recommend the re-flow temperature $245^{\circ}\text{C}(\pm 5^{\circ}\text{C})$.the maximum soldering temperature should be limited to 260°C .

5.2. Don't cause stress to the epoxy resin while it is exposed to high temperature. Number of re-flow process shall be 2 times or less.

6. Description:

- **Three Digit LED Display**
- **Digit Height:9.2mm(0.36")**
- **Gray Face and Milky Segment**
- **Color: White**

■ ABSOLUTE MAXIMUM RATINGS AT TA=25°C

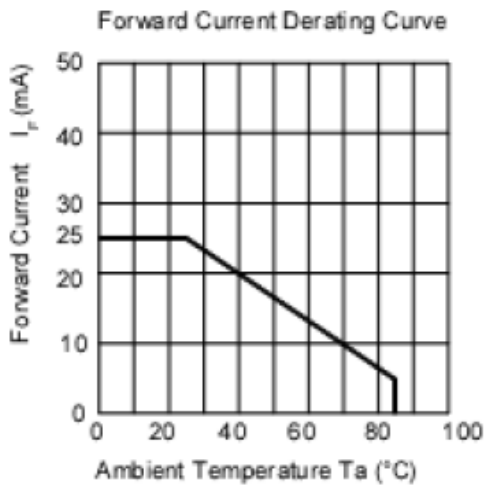
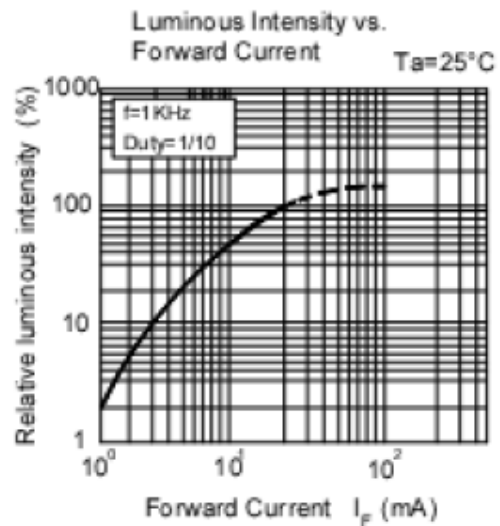
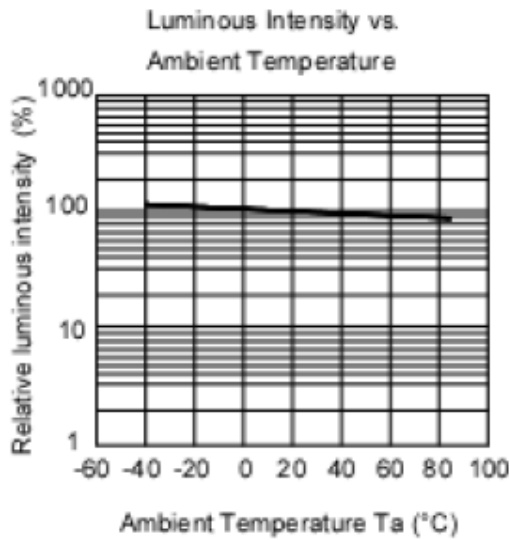
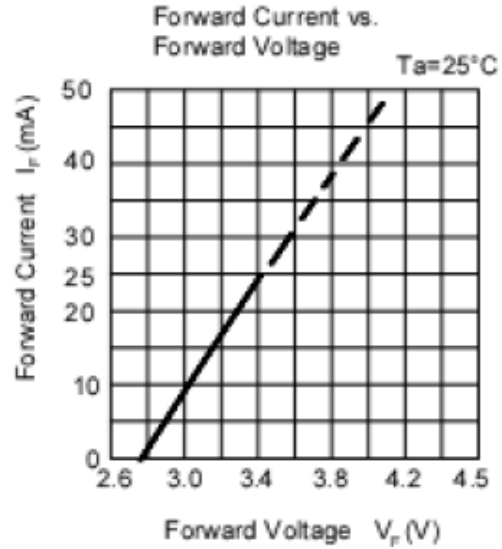
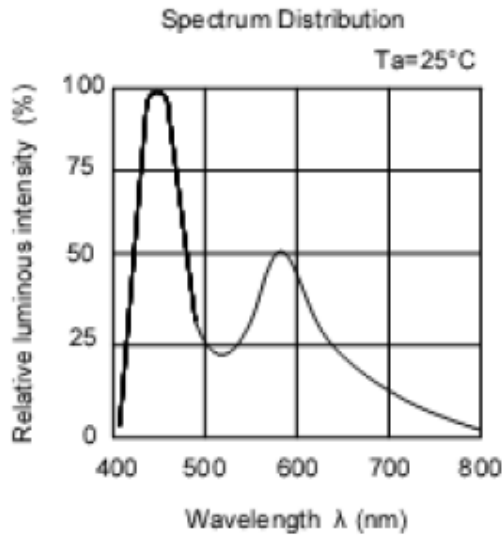
Parameter	Symbol	Condition	Color	Rating	Units
Power Dissipation Per Segment	P_d	—	White	92.5	mW
Forward Current Per Segment	I_F	—	White	25	mA
Peak Forward Current Per Segment	I_{FP}	1/10 Duty 1KHz	White	100	mA
Reverse Voltage Per Segment	V_R	—	White	5	V
Operating Temperature Range	T_{opr}	—	—	-40~+105	°C
Storage Temperature Range	T_{stg}	—	—	-40~+105	°C

■ Electrical/Optical Characteristics Rating(Ta=25°C)

Item	Symbol	Test conditions	Location	Rating			Units
				Min.	Typ.	Max.	
Forward Voltage	V_F	$I_F=20mA$	Per Chip	2.6	3.2	3.7	V
Reverse Current	I_R	$V_R=5V$	Per Chip	—	—	100	μA
Luminous Intensity	I_v	$I_F=10mA$	Per Chip	37.001	—	78.5	mcd
CIE Coordinate	X	$I_F=20mA$	Per Chip	—	0.30	—	nm
	Y			—	0.28	—	
Luminous Intensity Matching Ratio (Segment To Segment)	I_{v-m}	$I_F=10mA$				1.2:1	

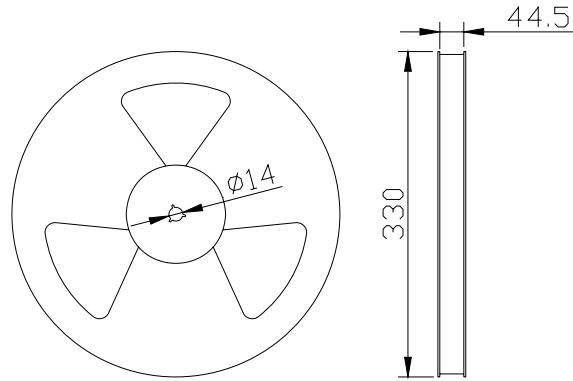
■ Luminous Intensity Sorting: (Luminous intensity tolerance :+/-10%)

Rank	Symbol	Condition	Min	Max	Unit
X	X	$I_F=10mA$	37.001	43.0	mcd
Y	Y	$I_F=10mA$	43.001	50.0	mcd
Z	Z	$I_F=10mA$	50.001	58.0	mcd
Z1	Z1	$I_F=10mA$	58.001	68.0	mcd
Z2	Z2	$I_F=10mA$	68.001	78.5	mcd

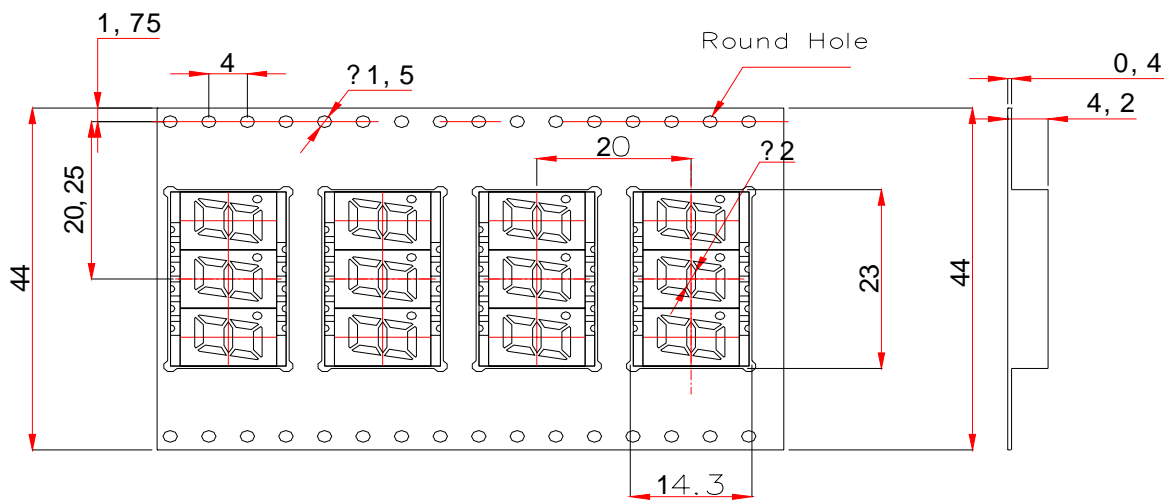


WCN Opto Group Co., Limited

■ Packing Reel Dimensions(mm):

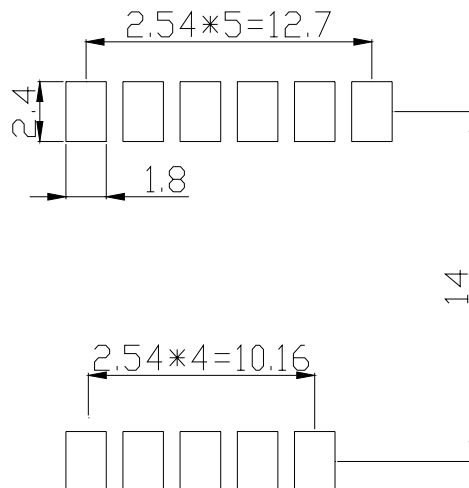


■ Dimensions of Tape (Unit: mm)



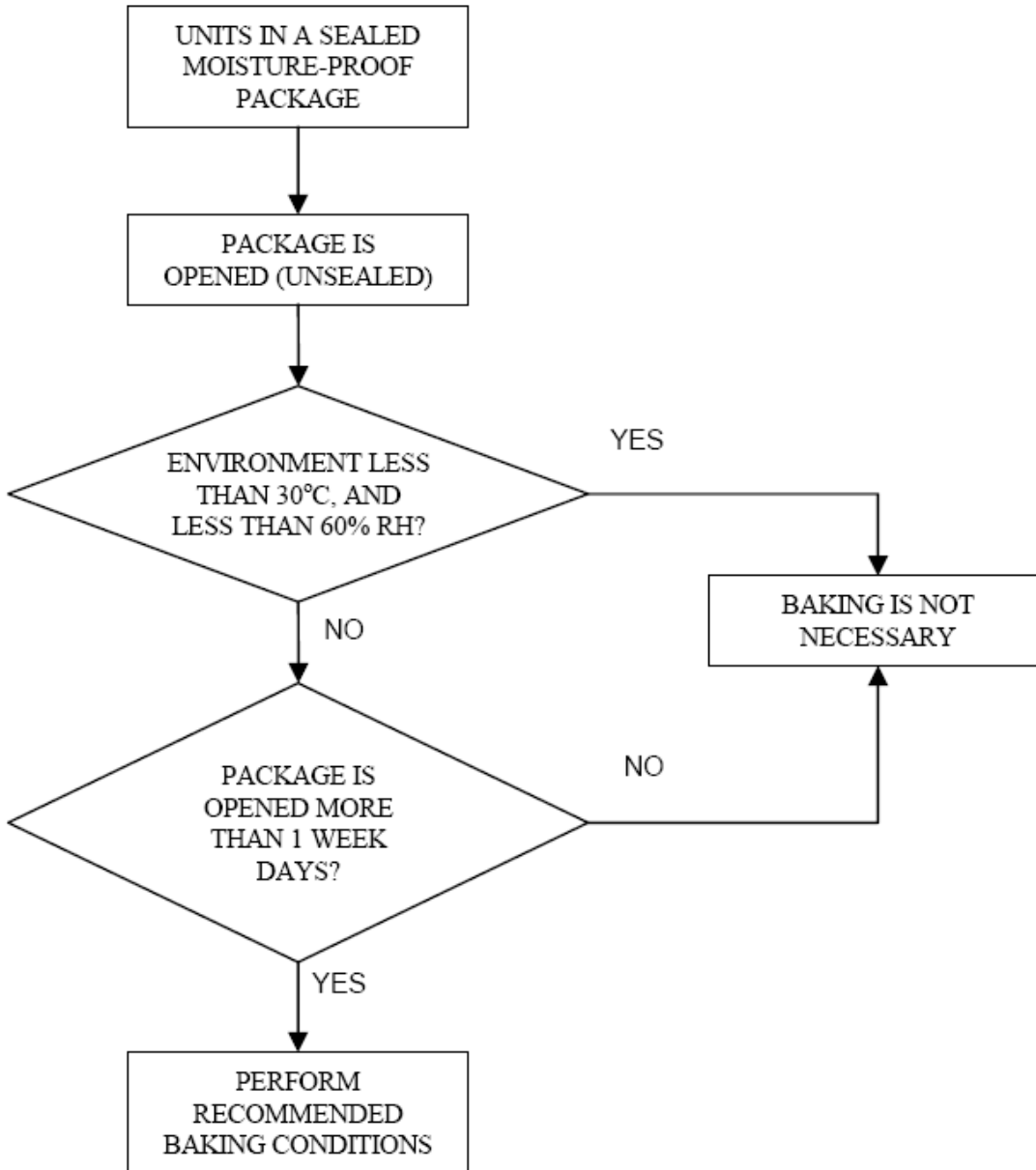
■ One Reel contained 700PCS products:

■ Recommended Soldering Pattern:



Moisture Proof Packaging:

All N/D SMD displays are shipped in moisture proof package. The displays should be stored at 30°C or less and 60% RH or less. Once the package opened, moisture absorption begins.



Baking Conditions:

If the parts not stored in dry conditions, they must be baked before re-flow to prevent damage to the parts.

Package	Temperature	Time
In Reel	60 °C	≥ 48hours
In Bulk	100 °C	≥ 4hours
	125 °C	≥ 2hours

■ Baking should only be done once.